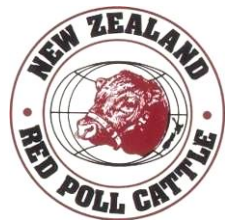


# RED POLL NEWS



**Winter Edition**

**August 2025**



## **CONTENTS**

|    |  |
|----|--|
| 02 | Contents   |
| 03 | Directory  |
| 04 | President's Page   |
| 05 | Secretary's Say; Inny Vale advertisement                       |
| 06 | Patron's Page - Robin Shepherd, QSO                            |
| 07 | NZ AGM Tour 2025 Report & Photos                               |
| 13 | Strathwell Report  |
| 15 | Kaihinau Report  |
| 16 | Opoutere Report  |
| 17 | Rosemarkie Report  |
| 18 | AJ Farms, Canada   |
| 19 | Further News from Canada, Shadow Creek Farm                    |
| 20 | Shrafft's Commercial Herd Report                               |
| 21 | Inny Vale Report   |
| 25 | Stoneyacres Report   |
| 26 | International Congress Tour Part 4                             |
| 33 | Turanga Stud, Australia – AI bulls with semen available for NZ |
| 34 | Uruguay Update   |
| 35 | UK Red Poll Cattle Society - Year in Review                    |
| 38 | A Bit of History   |
| 39 | UK Red Poll Society Info                                       |

### **Front Cover Photo:**

Cow at Mudgeway's **Whiskey Creek** Stud on AGM Tour

## **DIRECTORY**

|                            |                         |   |
|----------------------------|-------------------------|---|
| <b>Patron</b>              | Robin Shepherd          |   |
| <b>President</b>           | Ian Fleming<br>Email    | ☎ 03 329 1787<br><a href="mailto:iafleming@scorch.co.nz">iafleming@scorch.co.nz</a>                 |
| <b>Secretary/Registrar</b> | Warwick Potts           | <a href="mailto:redpollassociationnz@gmail.com">redpollassociationnz@gmail.com</a><br>☎ 06 372 7842 |
| <b>Vice-President</b>      | Neil Wilton<br>Email    | ☎ 06 379 7546<br><a href="mailto:neilwilton@yahoo.co.nz">neilwilton@yahoo.co.nz</a>                 |
| <b>Executive</b>           | Allan Bridson<br>Email  | ☎ 07 865 8642<br><a href="mailto:ahbridson@slingshot.co.nz">ahbridson@slingshot.co.nz</a>           |
|                            | Kelvin Lane<br>Email    | ☎ 06 362 7254<br><a href="mailto:kathrynlane@gmail.com">kathrynlane@gmail.com</a>                   |
|                            | Athol Sowry<br>Email    | ☎ 06 376 4754<br><a href="mailto:athbey@inspire.net.nz">athbey@inspire.net.nz</a>                   |
| <b>Editor</b>              | Helen McKenzie<br>Email | ☎ 06 372 7842<br><a href="mailto:rosemarkie@wise.net.nz">rosemarkie@wise.net.nz</a>                 |

**Website:** **[www.redpollcattle.co.nz](http://www.redpollcattle.co.nz)**

*The Association accepts no responsibility for the accuracy of any published opinion, nor information supplied by individuals or reprinted from other sources. Items may be abridged or edited.*

**Closing date for next newsletter is November 10<sup>th</sup>, 2025**

## PRESIDENT'S PAGE



Firstly, I'd like to congratulate the Wilson's Grand Champion success at the Southern Grassfed Carcase Classic 2024 competition in Australia. Red Polls and the Wilson family were the big winners when a steer from the Oakwood stud took out the Grand Champion Carcase award at the 16<sup>th</sup> Southern Grassfed Carcase Competition held at Tey's Naracoorte works in April last year. The 276.6 kg carcase was the only one in the class to score 35/35 points for saleable meat yield, 20/20 for 84sq.cms LEA, 15/15 6mm rib fat and 10/10 for 11mm P8fat.

The winning carcase came from class 2, single steer or heifer 260-300kgDW with 932 entries. It scored 86.83 points which was 3.3 points ahead of second place.

Alan says, "the competition has changed over the years from emphasis on muscle yield to a more balanced approach with an increase in fat content acceptable. We have moved from quantity of lean muscle to quality of eating experience reflected in the scoring system we use." Having the ability to finish prime steers and heifers requires great finesse.

Anita and I visited the Oakwood Stud over 10 years ago and noticed the Wilson's great operation firsthand. The ability to finish steers and heifers to a consistently high standard was obvious. This is an example of just what our breed can achieve.

I am looking at buying semen from 3 sires from the Tuanga Stud [in Australia] and was wanting to know if anybody else was interested. The three sires are Almora Amos, Turunga Curly Wurly and Turunga Why Such A Fuss. The Turunga Red Poll Stud was established in 1985 by Eric Abbott and is now managed by his son Greg and his granddaughter Brittany. If any other breeders are interested, we could help share the cost associated with importation and testing etc. Finally, as we move from Winter to Spring, I wish you all a successful calving. Hopefully the weather is kind during this vulnerable farming stage.

*Cheers  
Ian Fleming*



## **SECRETARY'S SAY**

This year's Herd Book #70 has been published and will be sent with the newsletter to full members. There are 47 heifers and 15 bulls registered in this issue.

Since the AGM, progress has been made on restarting the website at [www.redpollcattle.co.nz](http://www.redpollcattle.co.nz). There are still improvements to be made to make the presentation better, but any content or comments you want included please send them to me.

As calving has started for some and others will start shortly, I hope all goes well. I will be sending out the Herd lists for registering this year's crop of calves shortly. A reminder that this return is due by the end of January 2026.

The number of breeding members, and subsequently the number of cattle in NZ is still our main concern for the future of the breed in NZ. We all need to put the breed out there where we can and encourage the use of bulls to other farmers. (Easier said than done unfortunately!)

If selling breeding stock to first time buyers, please pay for a year's Associate Membership as is customary within the Association and forward contact details to me so they may receive the newsletter.

*Warwick Potts*

Registrar/Secretary/Treasurer

☎ 06 372 7842

[redpollassociationnz@gmail.com](mailto:redpollassociationnz@gmail.com)

---

## **FOR SALE**

Sarah Elliot at Ashburton has some yearling bulls for sale.

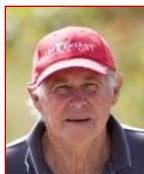
They are sired by Dawn Mist Ferd's Lombard who was from AI by Bowlands Ferdinand, a bull from Simon & Sally Temple's well-known English stud.

The dams are from the Dawn Mist herd.

If you are interested in these bulls please contact Sarah as below.

Ph: 021 076 9426

Email: [sarah@kernowfm.co.nz](mailto:sarah@kernowfm.co.nz)



## **PATRON'S PAGE**

It surely seems that the Gods are not kindly disposed towards some of the parts of our fair land. Extreme weather events have become quite common bringing with them huge impacts, especially on some rural communities. Some of these events have been as local as periods of intense wind or local torrential downpours or tornados or wave damage on the coast. In other occasions we have had major flooding, erosion and wind strike all occurring simultaneously across large swathes of the country.

In my mind, all of this changed weather behaviour is aligned with global warming and is here to stay. Because of that, we as people of the land are faced with many associated issues.

Among those challenges are considerations about changing our land use. Could it be that some of our often high-producing gravel and alluvium soils become just too vulnerable to attack? Similarly for some hill country lands. Might it be that insurance premiums will make an operation unsustainable? Could it be that communities lose their attraction and people move away? Might it be that dislocation to a farming operation destroys plans including bank loans on that property?

Is the emotional cost of seeing one's efforts wiped out just too hard to sustain? Could it be that roads and other services destroyed in an event might not be replaced or might take ages to get fixed? Could it be that a demanding world will not wait around for damage to be fixed and suppliers and customers will have moved on?

With all of those considerations, the challenges to farmers are often very demanding and require the ability to promptly change, adapt, review and make critical decisions and all of that while doing what farmers do best as they manage their pastures, care for their stock and enhance their little plots of paradise while hoping and praying that the gods will look more kindly on their endeavours.

*Robin Shepherd*  
*QSO*

**RED POLL HERD TOUR & AGM 2025**  
**Manawatu & North Wairarapa Area 27<sup>th</sup>-29<sup>th</sup> April**



▲ *Some Whiskey Creek females*

good to see other breeders and find out what they have been up to since last met with.



**Sunday 27<sup>th</sup> 2pm**

The tour began with a visit to the **Whiskey Creek** herd of Priscilla, Keith & daughter Jessica, Mudgway. Members gathered there at 2pm. The herd is situated near Palmerston North. We were able to view Priscilla's cattle nearby, followed with afternoon tea and much catch-up talk. It is always

*L - R*

*Warwick, Rosemarkie Stud; Helen, Opoutere Stud; Betty, Athbey Stud and hosts Jessica and Priscilla, from Whiskey Creek stud, view and discuss the merits of the cattle*

After that we viewed Keith's renowned chainsaw collection which evinced much interest among those of the group who like to use chainsaws! It is the result of several years of collecting with chainsaws varying in size from dainty through to massive.

For the evening meal we ate at the Kapadokya restaurant which serves Mediterranean and Turkish food. Meals were very tasty.

That night we stayed at the Kauri Court motel in the city – very nicely appointed, quite spacious rooms with two easy chairs! Some rooms had been recently refurbished. Warwick and I would stay there again.

## Monday 28<sup>th</sup> 10am

After a leisurely breakfast and a chat with the other breeders at the motel, Helen & Alan joined Helen & Warwick for the trip to Woodville to the **Athbey Stud**.

As we travelled over the Saddle Road from Ashurst to Woodville we were able to look across and see the progress of the new road that will replace the old Gorge Road. It is supposed to open in June. Also interesting to see how many more 'windmills' (wind turbines) there are on the surrounding countryside.



*L-R Helen, Allan, Betty, Sharon, Neil (back turned) Athol, Helen McK & Elroy partaking of morning tea at Athbey.*

On arrival we were welcomed with morning tea. After that it was a quick look at the bulls in the adjacent paddock before heading off to see an old friend of Athol and Betty's motorbike collection. He has done most of the restorations himself. Clive has a very interesting assortment of historic memorabilia as well, open by appointment only. Among his 'flights of fancy' were a couple of models of traction engines, made with whatever he had at hand based on old sewing machines. (Hand mower wheels at rear in this picture.)



We returned to Sowry's for a tasty lunch of soup and buns. Next up was a look at the cows.



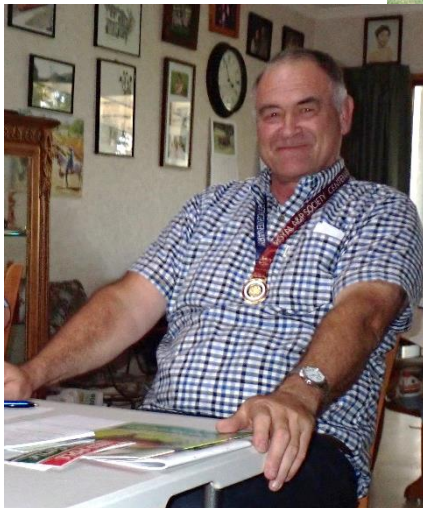
◀  
*Neil looks over some of the Athbey cows.*

*Alan, Helen & Kath cast their eyes over one of the cows. ✔*

Following lunch we gathered for the Annual General Meeting. *[By the editor's reckoning this was our 104<sup>th</sup> AGM. The Association's inaugural meeting to establish it was in 1921].*



◀  
*Association President, Ian Fleming, was awarded the Royal Agricultural Society's Centennial Medal which the Executive had decided should be awarded annually for Advancement of the Breed.*

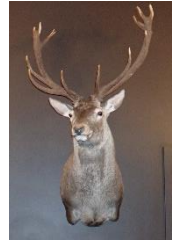


It was first presented at the 2024 AGM to Neil Wilton.

The W W Davie Martin Certificate for Best Promotion of the Breed was awarded to Helen McKenzie for writing the booklet on the 2024 Congress Tour.

From Sowry's we returned to Palmerston North where we later met up at the Hill Top Restaurant when we dined in the Antler room for the Annual Dinner. The restaurant is part of the Summer Hill complex. We were joined by Ross & Helen Maxwell, past members of the Association.

*Lord of all he surveys – the stag in the "Antler room" ➤*



*Left front to back: Betty, Athol, Warwick (obscured), Alan, Helen B., Ross  
Right f - back: Jessica, Patricia, Clive, Sharon, Neil, Kelvin, Kath, Helen M.*

**Photo:** Helen McKenzie



◀ L – R Neil's partner Sharon chats with fellow guest, Clive.

Clive's plate of spareribs and chips looks good enough to eat!

## Tuesday 29<sup>th</sup>

After leisurely breakfasts in our motel rooms members made their way down to Kelvin and Kath Lane's **Kaihinau** herd of commercial purebred Red Polls in time for morning tea.



*L-R Helen B & Kath catch up*



*L-R Warwick, Ian & Alan*



Kelvin had arranged for a speaker from Beef+Lamb NZ to come along and give a talk. She joined us for morning tea. We then viewed Kelvin's cattle before lunch.



◀ Some of the mixed age and sex cattle in the adjacent house paddock.

From there we went along the road to see more cattle in the paddock.

(Hopefully more of our members can attend the 2026 AGM.)

We then went back to Lane's for a very tasty lunch where we were joined by Robert and Ann Campbell who used to have the well-known Taonui stud near Feilding. They enjoyed reminiscing about their days of breeding and showing. Robert's father, JM Campbell, had founded the herd in 1928. Robert was elected President of the Association in 1985. Once lunch was finished, we dispersed to our homes. The tour was over for another year!



▲ L-R Alan, Helen B, Ann & Robert



▲ L-R Kelvin, Alan & Kath – the Lanes are wonderful hosts

## STRATHWELL REPORT

On the 25<sup>th</sup> of July we moved from our rental on farm to our new residence at 48 Panama Crescent in West Melton. I am commuting to work now to the lease block in Irwell, and this also means a reduced travelling time four days a week for Anita to her work at St Georges hospital. West Melton is a great location close to the motorway, away from rivers, and free draining soil. Who knows I may find some lease land in the surrounding areas for our cattle.



*Georgina and new calf.* 🐄

Early August we had our first calf from one of our show heifers. This is a great feeling when knowing what could go wrong. The balance of the herd should calve in August/September.

We sold five mixed age cows to Rusty Rhodes in Ward, south of Blenheim and eight 2-year-old heifers to Lindsay Ward in Ahaura on the West Coast of the

South Island. Lindsay operates a commercial operation and just loves what the Red Polls have to offer.

This Winter would be our wettest on record, however we look forward to a warm Spring. We had 31 heifers out grazing close by, this gave the lease block time to replenish while it was so wet. I do have to other graziers close by that I may call on for any future grazing demands.

Trent, our son, is in Perth, Australia looking to further his career in Rugby Management and coaching. He is enjoying the warm weather compared with Christchurch, NZ.

Brionne and her boyfriend Reece are doing their OE currently visiting my sister Rachel in Kent, England. Hopefully both will find jobs in London and reside there for the next two years.

*Cheers  
Ian & Anita Fleming*

*Cows from Strathwell Stud sold to Rusty Rhodes ▼*



## KAIHINAU REPORT    AUGUST 2025

Our best wishes and greetings to you all.

It is an overcast day. Dull with temperatures not much greater than 2. We did enjoy our brief get together and Annual Meeting at the end of April. Just wish the Coromandel and those who live there were not so far away.

We have counted our stud numbers for our statistics, and we are 6 down to calve on last year. This brings us to the point that we must all be aware of. It is estimated that there are only some four hundred Red Poll cattle among all of the NZ breeders of our Red Poll cattle. As a selective number for continuum breeding, it is barely enough.

We have come into the category as being a Hobby Breed, with no reference in national publications. We need to be considered as serious breeders of commercial cattle for a contemporary market.

I would suggest that from now on, all heifer calves be offered to breeders before they are quoted to the agency, or stock dealer, and that at least the best of market value be asked with the expectation of it being realised.

Our own cattle have come through the winter well, thanks to plenty of hay, and are now shedding their winter coats for their smooth summer ones. This means they can look patchy and not as attractive as they were as slick weaners in the autumn. We will this year mate 12 of our top 2-year heifers to help with our herd numbers to keep them over 100. We are purchasing 2 more Strathwell yearling bulls from Ian, for our seasonal mating.



*The photo- 2 Rosemarkie bulls, used over the herd as yearlings, have attained assessed target carcass weight of around 300kg at 22 months.*

*Will be used again this season.*

*Kelvin and Kath*

## OPOUTERE RED POLLS

Greetings to all Red Poll Farmers, from a wet and soggy Oputere.

We thoroughly enjoyed the Autumn Herd Tour and AGM. We find it so interesting to catch up with other Farmers and compare notes. A case in point was having a beer or three with Neil Wilton and comparing prices for our weaner heifer calves.

Neil sold his at Fielding, we sold ours at Tuakau the same week. Both lots of calves were virtually the same weight, around the 250 kilograms - the Fielding Calves made \$850 compared with the Tuakau at \$840.00.

I would've expected a higher price at Fielding, simply because of the reputation of better-quality stock going through the Southern Yards.

Back home again the cows are in good condition and behind the electric fence and getting a bit of silage to munch on, as are the few steers, both the R1 and R2.

The saved grass (remember when it used to be referred to as ASP? Only the old farmers amongst us would remember that far back) is lasting well and should hold out to early spring.

We bought in a small number of light lambs in the late summer and sent 25 of the best to the works last week. They averaged 23 kilograms and returned \$216.00, certainly a good return.

Wishing everyone a good Calving season, a bit of sunshine to dry out the paddocks and may the meat schedule stay at its record heights.

All the best

*Allan & Helen*



## ROSEMARKIE REPORT

Hello Everyone

We hope all is going well and not too soggy on your farms. We've had quite a bit of rain this Winter although we did have a brief respite of 3 nice fine days recently and a bit of gardening was achieved. We have not begun calving yet but are due to begin on the 1<sup>st</sup> of September. We have four 3-year heifers in calf to a young bull by Tristram out a Tamihana cow so looking forward to seeing them on the ground. We will also have our last crop of calves by Gravel Pit Tonka as well as a small number of cows in calf to Tristram. We have 23 cows due all told.

Youngest son Alistair is staying with us for a few days before heading off to Canada to a hunting and guiding outfit in British Columbia that he stayed with for a couple of months about 12 years ago. He is going to make himself useful without being paid, just to have a break from the heat, dust and creepy crawlies of outback Australia. He has several weeks' leave to use up.

Have been looking back at some of the bulls we had previously. I wish we had used Sim's Rohan more than one year.

*Rosemarkie Sim's Rohan#4053 was linebred to Tamihana Favourite Fred as both his dam and his sire were by Fred. Born Sept. 2001. Loaned out for 2002, used by us in 2003. ➤*



This year we have bought the ear tags that come with the attachment for tissue samples. We are keen to still test for Myostatin but also for BVD and marbling. I understand one can also test to see if the animal has the A2 milk gene. Could be worthwhile if supplying bulls to the dairy industry. The fact that Red Polls are not colour dominant (in our experience), means that they can go over Friesians and still leave a black calf unless the cow has a red colour factor which I understand may be present in a few Friesians. We wish you well for calving.

*Warwick & Helen*

## Report from AJ Farms Red Poll Stud, Worsley, Canada

At the beginning of 2022 we had the pleasure of meeting Dean and Marsha Anderson at Shadow Creek Farms. Like everyone that has been around these beautiful animals we instantly fell in love and couldn't wait to bring the Red Poll breed to the Peace area. We also gained Dean and Marsha as amazing friends and mentors.

We run a very closed herd of Red Polls, approximately 25-30 head, raising our own heifers and selling our own bulls. We also run a mixed commercial herd of Red Angus and Simmental which is strictly for the Canadian Beef Market, but WOW do we love to cross breed! The results are incredible.



Arthur and I continue to learn and grow our farm with our three wonderful children eager to help. Thank you, Helen for this amazing opportunity to share our little farm with the New Zealand Red Poll News. I look forward to sending you future updates.

*Arthur and Jennifer Weber*

**Editor's Note:** **Worsley** is a hamlet in northern Alberta, Canada within Clear Hills County. It is located in the Peace Country, 50 km (31 miles) east of the British Columbia border. It lies at an elevation of 650m (2,130ft) amidst prairie farmland and ranch land.

## **FURTHER NEWS FROM CANADA.**

Greetings from Shadow Creek Farm in the beautiful Peace River District. Winter was fairly easy, and spring arrived dry. There was no runoff from the snow melt as we entered our fourth year of a drought. The upside was our calving went great with no issues. Three sets of twins with 73 calves in total.

The calves are by a pair of Australian bulls, one from Eurimbla and the other Turanga. Three bulls raised on farm and one from the USA completed the sires used. I will definitely be keeping one of the Turanga bull calves for our use.

Marsha sold all 29 of her bulls this spring, as well her heifers that were for sale went early in the winter. The Canadian cow herd is at its lowest numbers in almost 40 years while the US herd is at its lowest in 70 years. We figure that heifer retention, even with the high cattle prices, is what is driving our bull sales.

On June 15<sup>th</sup> we received the first substantial rain in over three years, and it has remained rainy till mid August. Great for the land and pastures, not so good for putting up hay. Not complaining, just wrapping everything.

As we head into fall, I am counting bales and planning for the winter-feeding season. Marsha is happy and the cows are in good shape, what more can a person ask for?

*Hope everyone has a great summer.  
Dean & Marsha Anderson*



*A Eurimbla  
Casanova  
granddaughter, a  
spring calf and a  
Yongerellen Yen  
dam.*

*{Ed's note both the  
bulls mentioned are  
Australian}*

## NEWS FROM SCHRAFFT'S COMMERCIAL HERD.



*A line up of Red Polls on the Schraft farm*

Jo and Rob are looking at having three hundred calves in total this year from Simmental and cross bred animals as well as the Red Polls.



Poppy is one of Gena's cow's now owned by Rob and Jo Schrafft. 1-day old bull calf.

Note the grass which Jo has managed ready for calving cows.

Calving under way here. Three Red Poll calves on the ground. Looking good.

Cheers

*Robin Shepherd*

## INNY VALE UPDATE

We are about 3 weeks from calving, with very little grass but still plenty of baleage, thankfully. Thank you to Warwick for his call out email for anyone interest in my bulls. I have someone coming to look on Sunday.

Photos are of my second crop of calves sired by Dawn Mist Ferd's Lombard. Photos taken in April 2025.



*Cow #45 Dawn Mist TR Skittles and her calf, a registered bull (Inny Vale Bard Percy) by Dawn Mist Ferd's Lombard.*

*Below Cow #2 is Dawn Mist Yuri's Rosebud. The calf is Inny Vale Honour out of Dawn Mist Leo's Tribute.*



Kind regards.  
*Sarah Elliot*

## **UK Herd of Terry & Helen Mancey “The Moreton Herd” – 2025**



*Terry & Helen Mancey – photo from the 2011 World congress taken at Moreton Stud by Warwick Potts.*



At the turn of this century, in January 2000, Helen and Terry Mancey purchased two thirteen-month-old heifers from a farm in Uttoxeter. They had originated in the Shotwick Herd from Malpas Cheshire, Shotwick Mildred and Minnie. These were joined by a cow owned by Helen's father Jack Birch, Moreton Fiona, bred from a cow Jack had purchased from Barrie Hayward. This was the foundation of the herd as it is today, some 25 years later.

In the past 25 years many things have changed. At the start both Helen and Terry were in full time employment. Terry retired from his role as a police officer in December 2004, intending to play more golf, however more cattle and opportunities arose within agriculture, and the golf never got any better, with the handicap similar now as to what it was then. Helen continued in her role as a district nurse and practice nurse for many years after Terry's retirement, until her eventual retirement in 2022. She now spends much of her time supporting the Women's Institute, throughout the County.

The Moreton Herd is based in Caverswall, Staffordshire which is situated on the southeastern side of the City of Stoke on Trent, within the administrative area of The Staffordshire Moorlands roughly at about 600 feet. It has about 22 inches of rain per year spread evenly throughout the year. (Much more in the past couple of years.)

As keen supporters of the Rare Breed Survival Trust they wanted to help to protect what was then a rare breed. It was always their intention to show the cattle and that is what inspired the purchases and breeding policies. They started off using artificial insemination, until they bred a bull, Moreton Lord Tobias, (Toby) and a few other bulls followed, however they have always

inseminated some cows every year, using the semen from the Red Poll Cattle Society store and those from the RBST.

Having initially said they would keep a couple of cows for showing, the herd grew. At its peak it reached 74 head of cattle on the farm - they had to keep finding grazing and winter housing. They rented 85 acres in the village, twenty five of which they were later able to purchase; had a grazing project with Stafford Borough Council of 30 acres and for several years a conservation grazing site of 200 acres at Trentham Gardens, a destination on the south side of Stoke on Trent. This site had a population of deer and badgers and unfortunately the cattle contracted TB. It was decided to give it up, as being shut down for the show season would have been detrimental to their vision. The site with Stafford Council was kept until 2023 when it became obvious that they could not provide enough cattle to manage the grazing. Cow numbers had been reduced for several years due to losing the grazing in the village.

At the moment they have six cows. All but one can be traced back to the original foundation animals. The other cow is descended from the Longdendale herd, being a great granddaughter of Longdendale Myra 45<sup>th</sup>. The youngest heifer is Moreton Fiona 10<sup>th</sup>, and calf number 200 has just been tagged. In addition to the followers, they also house Bowland Flame for Sally Temple, giving a herd size of between 15 – 18 animals depending on the time of year.

The first calf they bred, Moreton Lady Selina, a daughter of Shotwick Mildred was probably the best cow they ever had on the show circuit, she won many prizes including breed Champion at the Royal Show in 2008, the RBST Interbreed Champion 2005. Terry is still trying to breed a better one; well, he thinks he has two coming through, so watch this space.



*Moreton Lady Selina*



Another highlight would be exporting semen from Moreton Danny Boy and seeing his offspring on the ground in America, Canada, and New Zealand. (Now sold out)

More recently show success has been achieved at the 2024 Royal Welsh Show being awarded Female and

Reserve Breed Champion, a feat duplicated at this year's Three Counties show, together with the Dual Purpose Interbreed cow and calf Champion with the cow Moreton Lady Kenya, a granddaughter of Shotwick Mildred.

This year has seen another first; they have assisted the British Breeds Revival Trust in their original population dairy project by allowing the use of a heifer to implant an embryo. A 100% Jersey calf was born to Moreton Mildred in May this year. ➤



In addition to the cattle, they also keep a flock of Hebridean sheep, again for showing but also for their fleeces which Helen uses in her crafting. Two Welsh Mountain ewes are also kept which are crossed with the Hebridean ram to produce a white Hebridean type fleece.

There have been many highlights in the past quarter of a century both in the show circuit and fellowship. They have visited New Zealand, Australia, America, Jamaica and Canada looking at Red Poll cattle, the friendships that have been made within the society both nationally and internationally has left them feeling very blessed.

## STONEYACRES REPORT

Hi fellow breeders,

I am sitting here in the warm with a severe case of flu to write a wee note about what has happened over the last few months. My cows are just eating grass and hay. Had a very good Autumn and a good start to Winter but now getting cold and very wet. Most of the grass is chewed out with mud everywhere. The younger cattle have gone to grazing. I have 40 cows to calve, 8 young heifers, 6 steers and 4 bulls. The grass is still growing due to the warmth of the stones.

The cows will be calving in top condition at a very shelter block that use to be part of main farm years ago and have just started calving with 6 on the ground all doing well as I am at my level that the farm can handle. When the heifers come back something will have to go, 6 heifers for sale or to the works.

All the best and hope you have a good calving.

*Neil Wilton*



◀ *First born calf of the season – a heifer, 10 days old in this photo.*

*First bull calf of the season – brand new.*



# RED POLL INTERNATIONAL CONGRESS & TOUR

## 9<sup>th</sup> - 22<sup>nd</sup> April 2024 Part Four

### 17<sup>TH</sup> INTERNATIONAL RED POLL CONGRESS

The Congress opened at 2.30pm with the Country Reports. Disappointingly nothing had been received from the United Kingdom, South Africa, Uruguay or Brazil.

#### **Jamaica Report** *by Calvert Louden*

The breed remains the premier beef breed in Jamaica and accounts for approximately 50% of local beef production. The parameters of breed performance remain strong, and there is a strong market for seed stock. Both pedigree and commercial breeders find favour in utilising our Jamaica Red Poll bulls. Although the export of live animals and semen remains low, there has been an ongoing expression of interest.



The pedigree herds relate to 18 male lines and the demand for herd sires of these lines is buoyant. Infusion of new genetic material has occurred through the importation of semen from USA and Australia. Plans are in place to import additional genetic material through semen and embryos, for broadening the genetic base of the breed. During the last decade 3,954 calf registrations were recorded of which 2,807 were female and 787 males.

#### **Australia Report** *by Alan Couch*

Good year at all shows. Punched above our weight at Carcase competitions. Youth camp new members 50 full, commercial and junior.

About 6000 cattle in the registered herd database but accuracy improving. Improved performance recording and genomics on offer. Made many changes (better and cost effective) via request for tender for cattle recording etc. But over 30 years ago 1000 members, now down to 100!

### **Canada Report** *by Dean Anderson (emailed)*

Well, there are 10 farms registered with Canadian Livestock with approximately 300 registered animals in Canada.

There are four members with about a dozen animals in the Ontario/Quebec region. These members/herds are slowly fading away.

There are two members in Alberta with fifty animals but one of these members (15 cows) is going out of business.

There are four members within British Columbia totalling 240 head. Out of that number we have 210 animals. The other members are fairly enthusiastic, and are growing their herds, as well as the one member from northern Alberta.

So, in conclusion the only area in Canada that has any serious activity is the western provinces, primarily in the northern section. There is one major herd with four other breeders that are growing their herds with purchases from the major herd.

### **Kenya Report** *by Jimmy Brooks (emailed)*

The progress for the breed in Kenya has been slow. The only breeder in the country is Mazao Yetu Ltd which currently has a stud herd of 62 cows plus followers and crossbred animals.

In the last 4 years we have tried to go green and look for alternative herbal based acaricides and anthelmintics. The change of wormers has been successful, but we still have to carry out occasional mass worming. Two herds totalling 300 animals were treated for worms in January 2024, for the first time in 18 months, as opposed to the previous regimen of three times yearly. However, we do treat individual animals on a needs basis and all calves at weaning. Diatomaceous earth is included in the mineral lick which appears to be helping.

In the case of ticks, we have had very good control in past years and the initial change to environmentally friendly treatments worked for 8 months. We then suffered an explosion in tick infestation, lost a number of animals and had to go back to weekly spraying with chemicals. Sadly, the hairier Red Polls seem to be more attractive to the ticks. (I should have followed Helen McKenzie's suggestion to work with Senepols, which have the slick gene, but I am an obstinate fool). Unfortunately, the ticks are partially resistant to the chemicals on the market, but we do get better control of ticks by adding some herbals to the mix. All this is compounded by the roads of access through our property

along which untreated livestock travel and the resident populations of baboons and monkeys, which are legion.

Calves are not sprayed until weaning. The way forward seems to be to identify animals that are less susceptible to infestation to retain as our future breeders. Ticks carry at least 4 diseases that affect our cattle, and we have recently found an additional burden of tsetse flies spreading trypanosomiasis. Not an easy scenario to work with.

We do have limited demand from others for the breed. Over the last few years, we have sold a few bulls to Uganda, Tanzania and even one as far as Zambia. Certain communities in Kenya, such as the Maasai, and some Ugandans, love red cattle, so the breed is attractive to them. Unfortunately, Red Poll semen is not readily available to most farmers, so having bought heifers, they then just cross them with semen from dairy breeds.

About 8 years ago we collected and sold semen from two of our bulls, one home bred by Balla Balla Bellamy (Aus) and another bred by Lolldaiga Hills Ranch, the previous large Red Poll producer in Kenya from where our foundation stock came. This was a grandson of Maleer Lazarus (Aus). Eurimbla also kindly donated straws from E. Gladstone (Aus) for distribution. Newer regulations do not allow us to sell semen that we have collected on farm or imported, since we are not a licenced semen importer/seller. We do, however, have a good bull by Fedw Stig (UK) which is going to a government owned bull station. They will collect semen from the bull. We will retain what we need and any surplus can be sold by them. If this works, we will make available other bulls for a similar programme. This will spread the genetics to a wider market as the Station has agents/distributors throughout the country, who sell at a subsidised rate of less than US\$2.00 per straw as opposed to imported semen which can cost up to US\$40. They also export to neighbouring countries. I know they have recently done a special collection of 5,000 Brown Swiss straws for Burundi. With luck Red Polls will follow.

**USA Report** *from Jim Jackson, Association Secretary (emailed)*

The American Red Poll Association is doing well. Cattle prices are up currently. The last 3 Red Poll sales (held in 2023 and 2024) have done well. Active memberships this year are growing as there is interest in the Red Poll cattle. Below are some statistics.

For fiscal year Sept 2021 thru August 2022, we had an active membership of 189 and new registrations of 503 head.

For fiscal year Sept 2022 thru August 2023, we had an active membership of 120 and new registrations of 453 head.

For the partial fiscal year Sept 2023 thru Feb 2024, so far, we have an active membership of 142 and new registrations of 205 head.

Please note that an "active" member is one that has paid the annual dues for that year. We have many more members, but not all consistently pay their annual dues each year.

**NZ Red Polls** by Association Secretary, Warwick Potts (as at April 2024)

**Membership:** Associate – 21 (of which only 10 have cattle)

Full – 10

**Registrations:**

2023 Bulls – 13, Heifers – 38 (Approx 12 to come)

2022 Bulls – 8, Heifers – 46

**Issues:**

At present only 5 herds with greater than 25 breeding cows.

We have lost 3 large herds over the last 2 years.

Struggling to get new younger members.

Financially becoming difficult to continue as we are currently.

**Cattle:**

There are approximately 310 cattle thought to be in the NZ herd. Of these, there are about 150 in herds that are registering.



Alan Couch from Australia then gave a talk on the new recording and genetic data collection system that has been set up in Australia. The previous system through ABRI was costing too much for the Association and for members. Costs have been pretty much halved using the new system and the data able to be collected is much broader using DNA testing as well.

DNA tests that can be provided include: - Parental verification, Myostatin, PER, Slick [coat] and A2 [milk], milk and meat quality, Horned/Polled, Coat colour and BVD.



The second speaker was Canadian trained veterinarian, Barb Frey, currently working in disease management at OSPRI, Wellington. She spoke on how NZ handled the recent containment and eradication of mycoplasma bovis. Everyone was very interested in this with Barb very willing to answer any questions. She later joined us for dinner and the conversations carried on.



## **17<sup>TH</sup> RED POLL WORLD CONGRESS - MINUTES FROM THE CONGRESS**

The Congress convened at 2pm in Masterton, New Zealand  
Attendees were the Tour Party consisting of:

Alan & Cheryl Couch (Australia), Albert & Dorothy Hancock (Australia)  
Douglas and Catherine Payne (Australia), Robin & Ayleen Dawes (Australia)  
Erick Otieno Owino, Devon Sayers (Jamaica)  
Orville Palmer (Jamaica), Calvert Loudon & Anne Katein (Jamaica) &  
Warwick Potts & Helen McKenzie (New Zealand)

and members & their partners, of the NZ Red Poll Association:

Ian Fleming (president), Neil Wilton, Kelvin & Kath Lane  
Athol & Betty Sowry, Priscilla Mudgeway & Graeme Evans

Following an introduction from Ian Fleming, reports from each country were presented by members of the Tour Party or read out from those countries not represented. (Reports as previously noted)

In addition to the country report, Calvin Loudon presented a comprehensive overview of the agricultural state in Jamaica, a brief history of Red Polls in Jamaica, and the current part they play in the food chain. The presentation included the current direction the Jamaican Society is heading, their membership, and their success in their breeding programme.

Alan Couch then presented on the changes they have recently made in the recording system they use, and the benefits of the system to the members. This includes both a reduction in costs to members and the society, and significant additional information on the breeding and performance of their animals.

The guest speaker, veterinarian Barb Frey from NZ Ministry of Primary Industries, gave a presentation on the NZ's Government's operation to combat *Mycoplasma bovis*. Because NZ is one of the few countries in the world to not be host to the disease, every effort has been made to contain and eliminate it.

Following a brief general discussion, the Jamaican delegation offered to host the next World Congress, which was warmly welcomed. The timing for the next Congress would be advised by Jamaica as either 2026 (due to the NZ Tour being postponed for a year), or 2027.

The Congress adjourned at 5:00pm. Judy Evans joined us for drinks and dinner. The Congress dinner was held later that evening at the hotel.



Everyone adjourned to the hotel bar for pre-dinner drinks.

*L-R Albert & Dorothy Hancock (Aus) and Barb Frey, guest speaker, who joined us for dinner. ➤*



◀ *Some of the group catching up at the bar and relaxing after the busy day.*

*L-R (front 4) Ayleen & Robin Dawes, (Aus), Alan Couch (Aus) and Barb Frey.▼*



*◀ L- R Warwick Potts (NZ) and Erick Otieno Owino (Kenya) join in the dinner chat.*

*Sticky date pudding, one of the dessert options ▼*



*◀ Erick contemplates his affogato dessert.*

During dinner we discovered it was Neil Wilton's birthday. No age was given!



After dinner our Assn President, Ian Fleming  
farewelled the tour until Auckland. *To be continued...*

# Turanga

## RED POLL STUD Est. 1985

Greg & Brittany Abbott  
Email: [bmabbott73@gmail.com](mailto:bmabbott73@gmail.com)  
Mobile: (+61) 481353881

**SEMEN FROM THREE OF OUR  
LEADING SIRES AVAILABLE FOR EXPORT.**



THE TURANGA RED POLL STUD WAS ESTABLISHED IN 1985 BY ERIC ABBOTT AND IS NOW MANAGED BY HIS SON GREG AND HIS GRANDDAUGHTER BRITTANY WHICH IS SITUATED IN SOUTH WEST VICTORIA, AUSTRALIA. THE HERD IS BUILT UPON THE FOUNDATION OF FERTILITY, TEMPERAMENT, STRUCTURAL CORRECTNESS AND PERFORMANCE UNDER COMMERCIAL PRESSURES AND PASTURE MANAGEMENT.



**Almora Amos**

The backbone and most influential sire used at Turanga. He is the type of sire that is not an extremist but a true all rounder that can fit into a variety of markets and leave an impact. The longevity of this sire and that of his progeny is a testament to his correctness and balance of profitability traits.



**Turanga Curly Wurly**

Volume, length and capacity are a highlight of this sire. He adds growth, carcass performance and a little extra frame into his progeny.



**Turanga Why Such A Fuss**

Fuss is a low birthweight bull that displays an early to moderate maturity pattern that does not compromise on growth. His depth of body and spring of rib adds to his easy doing ability.



**Turanga Sylvia - An Amos Daughter**



**Turanga True - An Amos Daughter**



**Turanga Golden Ring - An Amos Daughter**

WHILST THE BULLS HAVE SOME DIFFERING INDIVIDUAL TRAITS, THEY HOLD A CONSIDERABLE AMOUNT OF SIMILARITIES THAT CAN BE SEEN THROUGH THEIR FEMALE OFFSPRING SUCH AS COWS WITH FEMININE FRONT ENDS AND BIG BACK ENDS WITH QUALITY UDDERS AND FINE SKIN AND HAIR TYPE. THE BULLS STAND ON SOUND FEET AND LEGS WITH EXCEPTIONAL TEMPERAMENTS. THEY ARE PROVEN SIRES WITH A MINIMUM OF 150 REGISTERED AND PERFORMANCE RECORDED PROGENY THAT INCLUDE BIRTHWEIGHTS. A VARIETY OF GENOMIC TRAIT TESTING HAS BEEN DONE ON THESE SIRES THAT INCLUDES CARRYING NO COPIES OF THE MYOSTATIN GENE.

**To inquire about this unique opportunity please contact Brittany where sire and progeny footage is available and further information. All inquiries are welcome and you can also follow us on Facebook on our page Turanga Red Poll Stud: Grass Fed Beef!**

## **NEWS FROM URUGUAY.** (Email of 13<sup>th</sup> June)

This week, we received notification from one of Uruguay's leading universities that our doctoral project has been approved. The good news for us and for the Uruguayan Red Poll Breeders' Society is that the research will focus on our beloved Red Poll. This research will last two years, and I believe the results will be very positive for the Red Poll.

The project is: "The Red Poll breed as a climate change mitigation and adaptation strategy in extensive pastoral systems in northern Uruguay: adaptation to heat stress, feed efficiency, and methane emissions."

In this regard, if your country's breeders' association has relevant information on the breed's history, and also if you know of any university research involving the Red Poll, it would be very helpful to add this scientific information to my research.

The expected results, based on our beloved breed, are promising. Many productive parameters will be investigated, which will enrich the knowledge and benefits of the Red Poll. For example, we will study the characterization of the breed and the production system: measurement of production variables and those associated with heat stress. We will also research and measure enteric CH<sub>4</sub> emissions, feed efficiency, and response to heat stress.

Anyway, good news for the Red Poll. It's a joy to share it with our colleagues in New Zealand.

Ing. Agr. (MSc.) Mariano Fernández Juncal  
Presidente de la Sociedad de Criadores Red Poll del Uruguay  
Estudio: Av. Gorlero nº615, ss 101  
Edificio Fontaine  
E-mail: [marianofernandezjuncal@gmail.com](mailto:marianofernandezjuncal@gmail.com)  
Celular: 0059899811660  
Oficina: 0059842443302  
Punta del Este, Uruguay.  
CP: 20100

**UNITED KINGDOM RED POLL SOCIETY**  
**Review of the year 2024– M.J. Martin, Society Chairman**

This year saw the Society get back to something like normal business with the County shows back and our social activities able to return. Council and Committee meetings were able to be held face to face although members could attend via Zoom if they weren't able to actually attend in person. Very sadly Phillip Ryder-Davis passed away during the year which will be a great loss to everyone concerned be it family, friends, East Anglian farmers and the Society. 16 County shows held Red Poll classes, with good sized classes in the West but disappointing numbers forward in the East. Devon County and the Royal Welsh held classes for the first time in many years. The National Show held at The Three Counties, held there due to Bluetongue restriction at the Norfolk Show, had a turnout of 26 cattle forward, judged by David Blunt.

Animal diseases, like Bluetongue, TB, and whatever arrives next in the UK, are making organising and attending shows more difficult than it used to be along with the related costs of showing. A big 'Thank You' must go out to all those members who show Red Polls, they are our 'shop window'. Another 'Thank You' is for the members and supporters who don't show but attend the shows to promote the marvellous breed of Red Polls. Ray and I attended the Devon Show for four days, a new show for the Society, promoting the breed in the South West. The National Show was held at The Three Counties Show in Malvern, which was a very enjoyable event followed by a bar-b-que in the evening where members and friends socialised alongside members of the Belted Galloway Cattle Society who had their stand next to ours.

There are 355 members. The makeup of the membership is: 239 Registering / Life Registering, 86 Associate / Life Associate, 7 Overseas and 23 Student / Junior.

There were 23 new members to the Society throughout the year with 12 resigned for a variety of reasons. Registrations for the year were 677 Registered Females, 38 Grading Females together with the 24 Bulls making a total of 739 animals, these are from 101 breeders.

This is a worrying downward trend compared to last year with 859 registrations from 114 breeders,

## **Show results: Breed Champions**

Devon – Pinguis Emily 25<sup>th</sup>, John Williams (Judge – Denis Jenkins)  
Hertfordshire – Capel Manor Enya, Capel Manor College (Judge – John Butler)  
Shropshire – Pinguis Emily 30<sup>th</sup>, John Williams (Judge – Hayley Higginson)  
Staffordshire – Pinguis Emily 25<sup>th</sup>, John Williams (Judge – Denis Jenkins)  
Suffolk – Hopeham Leviticus, The Barnes Family (Judge – Anthea Daw)  
Three Counties, National Show – Pinguis Jeremiah, John Williams (Judge – David Blunt)  
Cheshire – Pinguis Michael, John Williams (Judge – Andrew Kirk)  
Norfolk – Hopeham Nove-Star, The Barnes Family (Judge – Richard Hartshorn)  
Royal Welsh – Wheatfield Freddie, Anthea & Jeff Daw (Judge – Joshua Briggs)  
Nantwich – Pinguis Michael, John Williams (Judge Mark Cheetham)  
Ashbourne – Chorlton Lane Issy, Louise Leese (Judge – Ray Bowler)  
Leek – Moreton Lady Kenya, Terry & Helen Mancey (Judge – Joy Broughton)  
Oswestry – Pinguis Michael, John Williams (Judge – Tom Blunt)  
Westmorland – Chorlton Lane Hokey Cokey, Helen Arthan (Judge – Denis Jenkins)  
Welsh Calf Show – Pinguis Emily 32<sup>nd</sup>, John Williams.

The Society held its Annual Field Day at Curtis Farm, Fobbing, Essex by the kind permission of the Young Family.

The Herds competition again proved to be very popular.

**The National Herd Competition and The Large Herd** winners were The Pochin Herd of John Pochin, Barkby, Leicester, and **Small Herd** was won by The Wheatfield Herd of Anthea and Jeff Daw, Newcastle Emlyn, Dyfed. A very big thank you to Society President Andrew Blenkiron for judging

### **Regional winners were:**

Midlands – Pochin Herd (Judge – Paul Grainger)  
East – Hopeham Herd, Sarah and Gerald Barnes (Judge – Anne-Marie Hamilton)  
South – Boames Herd, David and Simon Tompkins (Judge – Sarah Barnes)  
North – Kiddal Herd, Elaine & Mark Hall (Judge – Mark Martin)

My wife, Gill, and I were honoured to be asked to judge the Northern Area of the Herd Competition this year which took us as far north as Hadrian's Wall. The presentation day being just outside of Leeds at Elaine and Mark Hall's

'Kiddal Herd'. We also, amongst other herds, visited the herd of Jimmy Dickenson who is out current President Elect. It was great to meet so many members in an area where I hadn't been before and to see different ways in which Red Polls can be utilised. We also attended the Midlands, Southern and Eastern Area Herd Competition Presentation Days.

Area Presentation days were well attended, it is an ideal occasion to view members' herds and to interact with other likeminded people. Thank you to everyone who entered the Herd Competition and to all those exhibitors who entered the various shows. A big thank you must be given to all the Judges who gave up their time to judge the various shows and areas.

The Annual Dinner was held at The Bell, Winslow, Buckingham. This was a well-attended event with around 60 members and friends attending. A big thank you to my wife, Gill, and Sally Hunt for all their work involved in arranging the dinner. An enjoyable night was had by all. Not only did we have fantastic food and service at the hotel, but we enjoyed a quiz, raffle and auction during the evening too; raising much needed funds for the Society.

Advertising in magazines now is getting very expensive, so we are utilising Facebook more frequently. We are also encouraging members and businesses to advertise in the newsletters and herd book to help reduce their costs.

The Society continues to build up a DNA profile database of the breed. To date 255 bulls and 277 females, which includes all AI bulls having been tested and profiled using Neogen's Igenity Beef Profiling. All 2023 / 2024 registered bulls tested for the A1/A2 milk protein gene. A small selection of females have also been tested. Going forward this information should prove important, particularly if the milking attributes of the breed which is increasing in popularity.

Our new Finance Office, Anne-Marie Hamilton, has done sterling work taking over from Terina Booker, a hard act to follow! She, and I have spent many hours talking to NatWest Bank to get the account signatories changed – it wasn't an easy task to do! She is now getting into a routine and is also helping

to look for external funding for the promotion and improvement of the breed of Red Polls. Thank you, Anne-Marie!

The role of Chairman would be a difficult one to do had I not have the support of both Ray Bowler, the Society Secretary and my Vice Chairman, David Hunt. Ray is a 'fount of all knowledge' when it comes to people, cattle and the Society. David is a 'fount of all knowledge'! Head of Finance, John Williams, and the finance committee must also have a mention, as they have managed to bring the Society's financial position into a better situation. I would also like to thank my wife, Gill, and David's wife, Sally, for their never- ending support too! Ray's wife, Susanne, has had a lot of stress in the last year, which included moving house (which contained the Red Poll office!), and deserves a 'Big Thank You' too. Thank you must also go to the Council Members who have supported me through a challenging year.

To finish this report on a high note, it is great that we have a new Patron in King Charles III. It is reassuring to know that we have a Patron who is interested in the breed, the Society, the countryside and farming.

---

### **Bit of History**



*Cow and calf at Oakwood stud on the International Congress Tour of Australia in 2014.*

## Red Poll Society (UK)

If you would like to join to the Red Poll Cattle Society (UK) contact [secretary@redpoll.co.uk](mailto:secretary@redpoll.co.uk)

or write to:

The Secretary, 48 Mayfield Road, Writtle, Chelmsford, Essex CM1 3EL, England.

The overseas associate membership subscription is £30 sterling; includes three printed issues a year of the newsletter. The newsletter is also available to view on-line, gratis.



## NZ Red Poll Badges Available

These are well made and beautifully finished and each one comes in a lovely presentation packet.

\$15 each + p & p (About \$3.50 for up to 6 badges). Size is approximately 3cm by 2¾cm.



Order from the Secretary, Warwick Potts, who will supply an invoice and the badge.

*“Do the best you can until you know better - and when you do know better, do better.”*

*Dr Maya Angelou*

## Photos Back Cover

**Top:** Cattle at Weber’s **AJ Farms Stud**, in Canada.

**Bottom:** Stoney Acres Max Pieter at Athbey Stud on the AGM tour this year.

