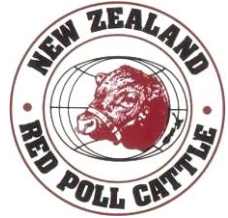
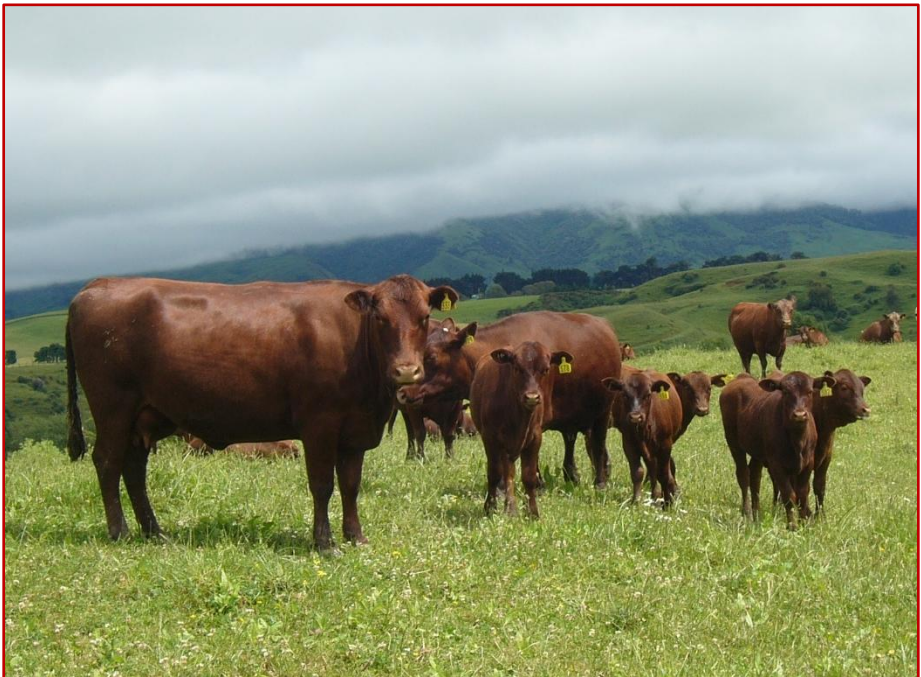


RED POLL NEWS



Summer Edition

December 2025



CONTENTS

02	Contents
03	Directory
04	President's Page
05	Secretary's Say
06	Patron's Page - Robin Shepherd, QSO – 90 th birthday!
07	Whiskey Creek Report
08	Four Diamond Report
11	Strathwell Report
14	Rosemarkie Report
17	UK Visitors, Paul & Kate Fardon
21	Kaihinau Report
23	Suffolk Trinity UK
24	Stoneyacres Report
25	Athbey Report
26	International Congress Tour Part 5
33	Jamaica – post hurricane update
34	UK News Wheatfield Red Poll herd
37	More UK News – Hopeham herd
38	USA News- obituary Mrs Muriel McKee
39	AJ Farms, Canada
40	Further News from Canada, Shadow Creek Farm
42	Bit of History
43	UK Red Poll Society Info; NZ badges

Front Cover Photo:

Cows and calves at Athey stud of Athol & Betty Sowry, Woodville.

DIRECTORY

Patron	Robin Shepherd	
President	Ian Fleming Email	☎ 03 329 1787 iafleming@scorch.co.nz
Secretary/Registrar	Warwick Potts	redpollassociationnz@gmail.com ☎ 06 372 7842
Vice-President	Neil Wilton Email	☎ 06 379 7546 neilwilton@yahoo.co.nz
Executive	Allan Bridson Email	☎ 07 865 8642 ahbridson@slingshot.co.nz
	Kelvin Lane Email	☎ 06 362 7254 kathrynlane@gmail.com
	Athol Sowry Email	☎ 06 376 4754 athbey@inspire.net.nz
Editor	Helen McKenzie Email	☎ 06 372 7842 rosemarkie@wise.net.nz

Website: **www.redpollcattle.co.nz**

The Association accepts no responsibility for the accuracy of any published opinion, nor information supplied by individuals or reprinted from other sources. Items may be abridged or edited.

Closing date for next newsletter is March 10th, 2026

PRESIDENT'S PAGE



Currently we have Dr Will Happer sponsored by Ground Swell travelling the length of NZ giving lectures on Methane Science and climate debate. He says, "The idea of reducing cow numbers to greatly reduce methane is crazy."

"If you killed all the cattle in the World, half a billion of them, to reduce the methane, you're only achieving a lowering of 0.07 degree Celsius.

It's a measurable amount, but it's certainly not the major amount. The major amount comes from rice paddies. "But people are not demanding that we stop eating rice. But we're supposed to stop raising cattle."

And yet we have the government wasting millions on Methane mitigation and study at Lincoln University and other Agri Zero schemes. It is up to us as breeders to voice our opinion on this issue to people in the agricultural sector.

I trust all our Breeders and followers of Red Poll cattle have had a good year.

Recently I have had some interest from Otahuna. A friend of our son Trent, Jarrod Adams, the gardener of this great place, said the owners are hoping to buy a couple of calves to raise next year. Who knows they may breed from them in the future but having them graze where they first originated in NZ would be great.

Just keep in mind the herd tour and AGM is in Canterbury next year so it would be great to see as many as possible attend.

Until the next issue, happy farming and all the best for the festive season.

Merry Xmas

*Cheers
Ian Fleming*



SECRETARY'S SAY

Concerning news from Jamaica regarding the effects of the recent hurricane on their cattle numbers and the ongoing feed problems. We can only hope things are on the improve, and we'll have to wait to see if they can manage the World Congress planned for 2027.

I've had the first return of a herd list for this season's calving, a reminder to you all that these are due in January.

By all accounts the weather has been very variable around the country with too much rain in the north, none on the east coast of the North Island, and adequate amounts elsewhere. I hope it settles down for the rest of summer, and that we can grow the cattle and enjoy the good prices on the market that are available. By all accounts prices will hold up for a while yet, but it wouldn't be farming without the ups and downs.

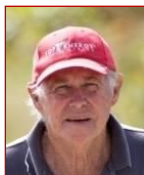
I hope everyone has had a successful calving season, and that it continues into the new year.

**The AGM for 2026 will be in the Canterbury & South Canterbury area.
Proposed date is for the end of the week/weekend after Easter.**

DATE AND VENUE TO BE CONFIRMED.

I wish you all a merry Christmas.

Warwick Potts
Registrar/Secretary/Treasurer
☎ 06 372 7842
redpollassociationnz@gmail.com



PATRON'S PAGE

Hello Helen,

My apologies for being a non-contributor for this edition but my imminent 90th birthday and the associated planning for a big gathering have occupied my attention too much, plus struggling to meet a deadline for getting work [*paintings*] finished for a new year exhibition.

Season's Greetings.

Robin Shepherd

We wish Robin a very Happy 90th Birthday on behalf of all members of the NZ Red Poll Cattle Breeders' Association

JAMAICAN RED POLL CATTLE SALE ON GRAND CAYMAN ISLAND

Grand Cayman Island, along with Cayman Brac and Little Cayman is a British Overseas Territory in the Caribbean.

In 2023, 22 Red Poll cattle were imported from Jamaica to Grand Cayman by their Department of Agriculture in an effort to improve local cattle stock and to reduce the reliance on imported meat from the USA.

On 30th August 2025, the Department of Agriculture held its first live sale of Red Poll cattle with 3 of the animals reserved for farmers from Cayman Brac.

The sale cattle were 3 bulls and 19 heifers.

14 farmers attended the sale at which five heifers and six bulls were offered. The prices received ranged from \$1250 to \$4,100. The comment was made that it was good to have stock that were bred under local conditions.

WHISKEY CREEK FARM REPORT

Hello to all,

From this year's calving I got four Red Poll calves, three heifers and one bull. In May of this year, I purchased six Red Poll heifers from Warwick and Helen at Rosemarkie Farm.

I am getting my Red Poll cattle numbers up. With twelve Red Poll cattle that have gone to the bull, Stoneyacres Max's Lisa on the 31st October.

We had a good winter with hay left over, this good weather continued onto spring with so much grass the cattle couldn't keep up so I sold three paddocks of grass to a contactor that he is going to bale for silage. I also have two paddocks locked up for hay for us.

Kind Regards Priscilla

*Stoneyacres Max's Lisa, bull,
with two of his ladies. ➤*



*One of Doug Pitsch's heifers sold to a neighbour
down the road as a house cow.*



FOUR DIAMOND REPORT

Greetings from Waikari! It's been a very exciting Spring for us here in North Canterbury. I purchased two in calf cows from Sarah Elliot, which have since calved, and two, two-year-old and one yearling heifer from Ian Fleming. This brings my breeding cow numbers up to 11. I also bought a yearling bull from Sarah.

It started out looking like a very promising spring as far as grass goes as we had a very wet winter, but the looming Nor Westers soon had it all dried up with no promising spring rain on the horizon. Luckily, we were able to secure another 20-acre lease to ensure that we have plenty of feed to see us through.

I have been busy over the last few years looking for AI straws and I have finally managed to come across a few different ones. We started AI'ing November 18th and have just done the last one today, 7th December, so hopefully our calves will be fairly close together. I will put the yearling bull in tomorrow to make sure everyone calves.

Austin and his new bride, Taylor

In other news we took a trip to Tennessee in early November to see our son Austin get married. It was a beautiful outdoor wedding made even nicer by the changing Autumn leaves.



After the wedding I reached out on Facebook to find some Red Poll breeders and was very fortunate to be contacted by the President and Vice-President of the American Red Poll Society who both live within a few hours from where we were. The meeting with the President didn't happen because of different schedules but we were able to meet the Vice-President and a few other breeders. We were treated like royalty. Thanks so much to Janelle and Ben Anderson, Jeff Talbot (Vice-President) and Bob and Brant Sanders. I will include some pictures of them their cattle.

I hope everyone has a great holiday season. Hope to see you all soon.

Doug



L-R Janell Anderson, Bob Sanders and Doug.

Bob & Brant Sanders' newly weaned calves

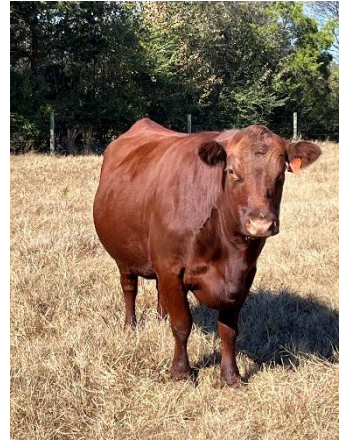


◀ L-R Doug with Jeff Talbot



◀ Bull

& cow owned by Jeff Talbot ▼



L-R Doug, Janelle Anderson & Bob Sanders, - 'the three of us outside a great restaurant in Tennessee where they insisted on buying Sharon and I brunch after a really nice morning touring their farms.'

No photos of Janelle's cattle. She is just starting out with the breed and is keen to milk them.

STRATHWELL REPORT

This year's calving went well after a prolonged wet Winter. We have had a warm Spring with regular rains allowing for good conditioned cows for mating. This year we are trying some new genetics on 10 cows with synchronised mating. The bull being used is Why Such a Fuss from the Turanga Stud in Australia. One of the cows is Supre Cappy's Tango HB 12168, a fifteen year old cow with great structure, body type and fertility which have contributed to her longevity. The other nine cows are a mixture of age and genetics.

This October we started our show season at the Ellesmere A & P Show in Leeston. As immediate Past President my duties were required in the Sheep Section judging the pet lambs. Thanks to Anita for gathering information on the contestants, making my job easier. However this coincided with the Beef Cattle judging which meant we had to organise three leaders for our two heifers and calf and missed the judges' placings and overall comments. We were delighted to find out that our two year old, Strathwell Georgina and calf, had beaten a Murray Grey cow to win Best Beef Animal and our yearling heifer was Reserve Champion.

The Canterbury Royal A & P Show started a day later this year i.e. Thursday to Saturday. Unfortunately, Thursday was wet for judging which didn't allow the cattle to show their true potential. However, we had some favourable comments from our judge Chris Herbert who placed our 2 year old ahead of the yearling for Supreme Red Poll, also securing the Nicol Dalley Memorial Trophy for Senior Female. Strathwell Misty won "The Knoll Trophy for Champion Yearling Heifer. This trophy was first presented in 1987 by John Watson of Dipton. The first recipient was JKS Elliot of Middlemarch, Otago.

It was great to catch up with Priscilla Mudgeway and friend from Woodville who flew down specially to see the show. The Friday was certainly the better day to have visited weatherwise.

Our Red Poll sign for both parades was carried by Kim Birchler. Her children, Tedd and Annabel were leading Kay Worthington's Lowlines and were keen to enter the Junior Handling class at our next show, the 150th Courtenay Show, a

week later. Both won their respective aged handling class, with Tedd winning overall. They have already shown signs of wanting to be involved for next year's shows.

It was great to host Kate and Paul Fardon from the UK. Paul got to lead our heifer in the Courtenay Show, winning the rest of the British Beef Section and second in the All Breeds Yearling Heifer class. Both Anita and myself enjoyed their friendship and look forward to catching up with them next June in the UK.

Merry Christmas to all fellow Red Poll enthusiasts.

*Kind regards
Ian & Anita Fleming*



▲ Gerard Gibb with Bob the calf. Chris Smith leading Strathwell Georgina. Anthony Cox was the Judge.

The ribbon says Ellesmere A & P Show, Champion All Breeds Beef, Senior.



Annabel Birchler leads Strathwell Misty to win her age group Handling Class at the 150th Courtenay Show



Tedd Birchler, winner of his section and overall winner of the Handling Classes with Strathwell Misty.



Paul Fardon leading Strathwell Misty for Ian & Anita Fleming at the Courtenay Show

ROSEMARKIE REPORT

We had some very welcome rain in the last couple of days but fortunately had the ewes waiting to be shorn shedded up before it started. Will be needing more rain before long. Hopefully baleage is being made next week.

We had 24 heifers and cows to calve this year. One of the heifers had an autumn calf by Tristram early in the year so he has gone off to the sale.

One of the older cows proved to be dry so she and another one that's calf died at about 3 days old are off to the works next Tuesday and have two others to cull when their calves are weaned. Their feet are not the best so will not be kept for another year. However, we have added 6 heifers to the mating groups this year so will still have about 3 cows more than we really want.

*Left Alistair,
Right Dean, in
front of the
machinery shed*

As I mentioned last time, Alistair went to Canada. He actually made it to stay a night with Dean and Marsha Anderson of Shadow Creek Stud.

He thoroughly enjoyed a look around their farm, learning

how things are managed in Canada during the long winters etc.

(See Dean's Shadow Creek Farm report for a breakdown of a year on their farm on page 40.)



Shadow Creek Target Mac 58M

This young bull's great grandsires on his sire's side are Mardan Ray's Promise and Yongerellen Emmanuel Yen.



(Semen from Mardan Ray's Promise (USA) was used by Tamihana stud and Y. Emmanuel Yen (Australia) by Garthmyl stud in New Zaland.)



The barn at Shadow Creek



Marsha and some of her laid-back cows



Marsha inside their barn.

Apart from the photo of Alistair & Dean I think the others are all taken by Alistair.

All the best to everyone for Christmas and a happy, healthy & prosperous 2026!

Warwick & Helen

UK VISITORS

Recently two friends of Helen & Terry Mancey visited New Zealand, Catherine and Paul Fardon. Thanks to Kate for the photos except the UK one who I do not have a credit for.

From Paul & Kate

Throughout November Kate and myself toured New Zealand. It was our first visit to this wonderful country, and we feel privileged to have experienced such a fantastic time in New Zealand.

Just before I was born my parents moved to Pendock in Worcestershire. My father had just started a job as herdsman with the Underhills Herd, at that time owned by Guy Philipson-Stow, milking forty Red Poll cows together with associated followers. We stayed in Pendock until I was twelve years old. Therefore, you will appreciate that Red Poll cattle have been a part of me for, quite literally, my whole life.

Over the years we managed to maintain a strong link with the breed of cattle meeting up with exhibitors at agricultural shows and visiting some of their herds. So, this year we decided to join the Red Poll Society as Associate Members.

Whilst we were attending the 2025 Royal Welsh Show we met up with Terry Mancey, someone we had met many, many times. We explained that we were visiting New Zealand and he offered to make contact with his 'Red Poll Friends' and arrange a series of on farm visits. Something we are eternally grateful for. He told us that the cattle would be spectacular and he was not wrong!!!

We started by visiting Allan and Helen's "Opoutere" stud farm and then stayed with Helen and Warwick on their "Rosemarkie" stud farm for a few days. They also took us to see Neil Wilton's "Stoneyacres" livestock, and we also met Judy and Graham Evans later in the day for a meal out. Wonderful people, wonderful hospitality and even better Red Polls.

It was then on to South Island to stay with Ian and Anita "Strathwell" stud who again gave us the most hospitable welcome for which we are truly grateful.

They also arranged for us to attend one of their local shows. I had the delight of leading Misty around the judging ring. I don't think I have 'come down' yet!

We left New Zealand knowing that the breed is in safe hands. The future will bring various challenges, but we are confident that you will rise to the challenge. Some of your ideas are very innovative and exciting and will ensure the future of the Red Polls.

Finally, a huge thank you for your hospitality and friendship. You welcomed us with 'open arms' and it was a privilege to have met you all. We really do wish you all well and look forward to seeing you again in the not-too-distant future.

Paul and Kate Fardon



Paul is on the left of Terry and Kate is on the right, helping Terry at the Three Counties show along with another friend.

We (Helen & Warwick) have always let it be known that we would welcome Red Poll breeders (and their friends) from overseas to stay with us and take them around to other local breeders where possible. It was great to get an email from Kate and Paul. They arrived in early November. join us.



*L- R Warwick & Paul
discussing the
yearling heifers at
Rosemarkie.*

L-R Paul, Neil, Helen & Warwick at Stoneyacres ✓





◀ *We took them out to local tourist attraction, Castlepoint Beach*



▲ *Graeme & Judy Evans and Neil Wilton joined us with Kate & Paul at a local restaurant for dinner.*

From the Editor's Photo Files #1



Red Poll x Friesian dairy beef weaners at Davy-Martin's in Northland 1997

KAIHINAU REPORT December 2025

Hello to everyone,

It is a fortnight before Christmas.

For us it is the solstice of summer sun and in the northern hemisphere winter. We have seen the main part of the breeding season in the spring and now it is the business of mating for another year. It could well be that we, as farmers, comply with factors of normality, regardless of the intense commercial pressure seen at Christmas.

No doubt we are thinking of making provisions for supplements for the coming winter but in the shorter term working around the drying out of the East Coast which has seen stock movements from East to West. Hopefully this will balance out in the New Year with rain that will ease or turn around the situation

Our cattle are responding to plentiful feed conditions. I have noticed that the calves are becoming accustomed to being herded by the dogs, staying with their mothers rather than making a break for it. The bull calves have all been steered.

Like everyone else, we are taken aback with the value of stock comparative to our 5-year average. It is, however, not unwarranted considering the previous margins versus cost escalations

Our intention is to slow down and enjoy the company of family and friends this Christmas season.

Thinking of you all and looking forward to receiving our newsletter to read and relate to our Red Poll family.

Kath and Kelvin



Rosemarkie Bull at Kaihinau, Herd sire, used as a yearling, now at 26 months



Kaihinau Autumn born calves, now weaned, looking for their mothers

THE SUFFOLK TRINITY

Top: Sculptures by Harriet Mead at the entrance to Suffolk showgrounds, now called Trinity Park. Below is a real-life representation of the Suffolk trinity.



STONEYACRES REPORT December 2025

My fellow breeders

I am here trying to work out where the year has almost gone since I last chatted. I had a visit from lovely couple of overseas Red Poll associates who had a look around my herd. Paul also related some interesting information about regen grassing which I am keen on, as are my Red Poll cows.

I have started to build my wall of baleage for winter feeding. The cows are doing well with plenty of grass. All have now calved with the loss of one calf and its mum off to the works. There are 36 calves on the ground, 26 heifers and 10 bull calves.

With a good winter gone, spring ended, it looks like we're in for a hot summer. The bull has been out for 2 cycles now so hope the job has been done, ha ha!

I have 36 cows and 8 heifers for next year's calving but would like to sell a few. With the extra heifers coming in to the herd the numbers are a little high.

All the best for Christmas and the New Year

Neil Wilton



L-R Warwick, Neil and Paul Fardon discussing the pros and cons of regenerative pastures at Neil's.

Red Polls certainly do well on this type of pasture and rear good calves on it.

ATHBEY REPORT

We all know how we can forget what previous seasons threw at us, but this season has so far been something of a difference. Early August we were saying what a great Winter it had been, still good stores of hay, baled silage and firewood on hand. Then we think the greater powers decided to punish us. September, rain was recorded on 18 days, with 19 days recorded in October. Nothing was able to dry out, and the farm became a bog.

Thirty-six years we have been on this farm and water lay in paddocks we have never seen before. The hay shed is empty; all baled silage fed with just a little firewood remaining. Pugging of paddocks we have never seen so bad. Attempts to smooth damaged paddocks has had to be stopped due to November being so dry and grass recovery being affected. November saw just 32mls of rain recorded on 10 days. As we write this on the 3rd of December 45 mm of rain has just fallen, and the paddocks are already greening up.

Red Poll Spring calving saw all calves on the ground unassisted with the only disappointment being the last heifer to calve presenting a dead calf. Six weeks later she made \$1712 net on the hooks. No second chance here. Certainly, enjoying this high beef schedule with a spare R2 Red Poll bull at \$3682 net on the hooks recently.

A concern starting to appear is we have made no silage, and any grass for hay is yet to be identified and put aside. Also, no paddocks could be spared so no summer crops have been put in. With 10 R1 heifers with the bull we hope our herd numbers will get back into the mid twenty's.

Compliments of the festive season to all members of the Red Poll family.

Kind regards

Athol & Betty Sowry

RED POLL INTERNATIONAL CONGRESS & TOUR
9th - 22nd April 2024 Part Five
17TH INTERNATIONAL RED POLL CONGRESS

Monday 15th April, Day 7

We were all gathered ready to catch the bus at 8.15am to leave at 8.30am. On the way north, bus driver Les gave a commentary on various places including mention of Manukura, the white kiwi at Mount Bruce Bird Reserve (Pukaha). There was a bit of drizzle as we passed through Eketahuna which turned to rain at Pahiatua. In the distance we could see blue sky and jokingly said it must be over Athol and Betty's **Athbey Stud** farm which it turned out to be. The country was looking very green.

On arrival we were greeted by the Sowry family; Tracey Collis, the Taranaki District mayor; another council representative Scott, and a reporter from the "Bush Telegraph".



L-R Orville Palmer, reporter, Mayor, council rep, Doug Payne, Ayleen Dawes, part of the tour group listening to Athol make introductions.



◀ *Athol describing the layout of their farm*

L-R Erick & Calvert





◀ *A couple of Athol and Betty's cows.*

Number 222, Athbey Connie, on the left, stood out wherever she was in the herd. She was born in 2018. By Athbey Lancelot out of Evanlea Lora.

The Athbey herd is a lovely even line of cattle with rigorous culling taking place as required.

Some Athbey cows ✓



From looking over the livestock, it was undercover in the shed for morning tea.

◀ *L-R Betty, Priscilla, Jessica & Athol sorting out morning tea.*

Athol has a few favourite items of vintage agricultural machinery on display. Inside the shed were two small bulldozers and outside was a bright red

McCormick-Deering Farmall tractor. The machines attracted much attention from our visitors with Orville unable to resist a turn in the driver's seat.



◀ A selection of Athbey Stud's young bulls on display.

Once again, we climb onto the bus for the trip over the Saddle Road and down to view Kelvin & Kath Lane's commercial **Kaihinau** herd at Kaihinau Road on the way to Levin. Seeing we had not had a view of the Southern Alps or the Tararua's so far on the trip there was hope we might get to see the panoramic view over the Manawatu from the top of the Saddle. The sky had cleared a bit. There was a nice herd of Herefords grazing on the left side as we came down off the Saddle to Ashurst. We then went over the Manawatu bridge and onto Old West Road to skirt Palmerston North. The wind turbines on the hills to our left were lazily turning in the breeze.

Palmerston North has a population of about 90,000 citizens. Another light shower as we approached Kelvin's where we had a lovely lunch. Kath was ably assisted in the kitchen by women from the Farm Discussion group – friends of 30 years. It seemed a long time since morning tea. Lunch consisted of fresh sandwiches, quiche, sausage rolls, with grapes, pineapple, orange segments and rock melon for afters – the latter very refreshing. This was followed by a welcome cuppa and various slices.



Kelvin had invited some friends who are members of the local Maori iwi along. Their spokesman, kaumatua Robert Ketu, welcomed us to the area and told us a bit of its history as well as about their co-management and guardianship of the local

rivers and some of the land.

L-R Dorothy Hancock & Cheryl Couch enjoy the comfort of Lane's sofa after lunch. ➤

After lunch we walked along to see the mixed mob of Red Poll and Red Poll cross heifers. Kelvin uses registered RP bulls.



Kelvin with his mob of mixed pure & crossbred Red Poll heifers.➤

We then took the bus along to see the mixed mob of cows further down the road. There was a very nice bull from Ian & Anita Fleming's 'Strathwell' stud running with the cows and calves.



◀ *Strathwell bull out with the cow mob.*

After Kelvin and Kath joined us briefly on the bus to be thanked, we left for Priscilla, Keith and Jessica Mudgeway's **Whiskey Creek Stud**

at Milsom Line, west of Palmerston North and just south of the Palmerston North airport. Their cows came from the Athbey stud of Athol & Betty Sowry. Priscilla is their daughter. Five cows and three young heifers were on view.



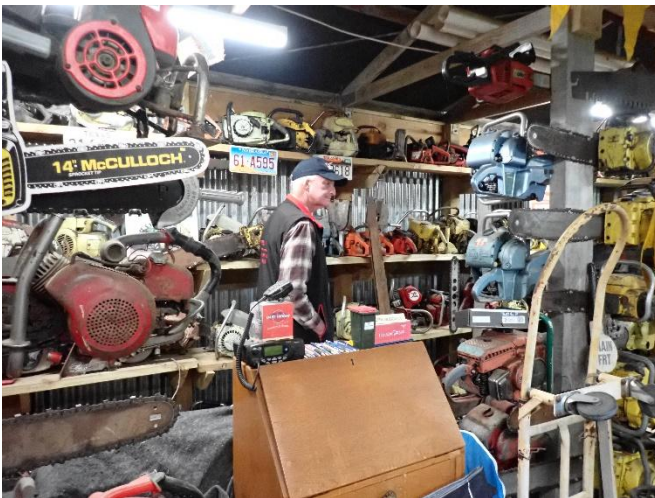
◀ *Priscilla, 2nd right, welcomes the group to their stud.*

Priscilla is hoping to run 10 registered cows in the future and maybe more. They have some fattening cattle running there at present, so room to expand their breeding herd.



Viewing the cattle at Whiskey Creek ▲

They have 50 acres of farmland, some of which is in the flightpath of the airport so has restrictions on what can be built or planted in the way of trees. More food – a tasty afternoon tea with muffins, melting moments and cold drinks. Before we left, we visited Keith's amazing collection of chainsaws.



◀ *Albert gazes in wonderment at the variety of chainsaws contained in Keith's collection.*

They vary in size from minute replicas to giant log cutting size. Keith's newish John Deere tractor also evoked some masculine interest.



◀ *Keith shows an item to Calvert and Orville.*

From Whiskey Creek it was into town to our accommodation for the night, the Coachman Distinction Hotel. The stay was for two nights. Dawes, Hancocks and Calvert & Anne sat with Warwick and Helen for dinner. A very enjoyable couple of hours! The ambient air temperature had cooled off somewhat from earlier – time for the jersey.

To be continued

From the Editor's Photo files #2



Red Polls in the Grand Parade at Canterbury Show 1996

JAMAICA UPDATE AFTER THE HURRICANE

Article from Rory Notice, Jamaican Breed Society secretary.

We were hit really badly by this Hurricane; still many areas without electricity, significant loss of animals and are yet to contact all our members. We were able to have a small committee meeting and based on where we are there are doubts as to our ability to host the Congress in 2027. We are awaiting a larger cohort of members to make a final decision. In the westerly sections of the island, we are still losing animals due to lack of forage and disease.

We have no reports of lives lost which is wonderful, but farms are severely damaged.

The photo attached is of one of our farms where you are able to see the trees around have no leaves. [*and loose sheets of iron on the ground – Ed*]



UK NEWS

2025 National Herd Competition Winner - Wheatfield Red Polls

Situated on the border of Ceredigion and Carmarthenshire in the heart of South West Wales lies the upland Angorfa Farm. Home of the 2025 National Herd Competition Winner, the Wheatfield Red Poll herd, owned and managed by Jeff and Anthea Daw.



▲ Pictured: Anthea (left) and Jeff Daw (right) pictured with National Herd Competition Judge, Joy Broughton (middle)

Background

The current Wheatfield Red Poll herd takes its name from its beginnings in Monmouthshire. Started initially by Anthea's mother, Sybil Gleed in 1994, with one cow and calf and growing to also an award-winning herd of



50+ animals before the herd was dispersed in 2009. This was until 2012, when Anthea and Jeff decided to buy in 3 heifers using the same prefix which were managed and housed under the expert care of Alan and Sue Timbrell.

In 2020, the decision was made to bring the animals back towards home in Newcastle Emlyn, South Wales where a purpose-built shed was made along with the acquisition of neighbouring fields of rough grassland. By this time numbers had grown 7 including followers.

Coming from an experienced background in dairy farm management and showing of pedigree Holsteins and Jersey cattle, both Anthea and Jeff wanted to apply the same passion and detail to their ambitions with the Red Poll herd. With a motto of wanting to “go back to go forwards”, the approach has been utilise traditional genetics, including their own Wheatfield Dukes Nigel to bring balance and to work towards the traditional dual-purpose nature of the breed. With the key traits of udder development, carcass confirmation and grazing suitability prioritised within breeding decisions.

Current Day

Moving forward to 2025, the herd now has grown to 25 animals including followers and also is now utilising the sheds and grazing available from Dolau Farm, located nearby and owned by Glenda Jones and family. The herd has transformed all grazing fields into productive swards to support an extended grazing period and also the calving period in Autumn.



Future Plans

Having now reached its peak capacity in regards to land availability and housing space, plans are now underway to help progress into a self-sustaining herd. With now having a home bred bull in Wheatfield Red Dragon (progeny of Gedding Viscount), plans are underway to breed own replacements and also to provide beef boxes on an annual basis. Providing the opportunities for more in the Southwest region of Wales to experience the taste and importantly understand what contributes to the quality of Red Poll produce.

On top of the achievement of winning the national herd competition this year. Anthea, in her role also as a society committee member and field officer, plans to take the approach of using this accolade to help further promote the breed in circles of communities yet to be experienced or explored. Helping introduce new individuals and farms to the breed but also encourage younger generations to understand the dual-purpose capability and its role with managing our rural landscapes and supporting sustainable food production.



Wheatfield Fantastic Crocus

MORE UK NEWS - Hopeham Red Polls

We do have a herd and have around 150ish Red Poll heads on farm at the moment. We have our own butcher's shop that we supply 3 bodies to every 2 weeks. Our daughter also supplies the pork, if you want to take a look at the shop Face Book page it is "Farmer Barnes' Butchery". My daughter manages the shop but does get her farm fix too!

As for the herd, back on the farm we have 46 cows and then the followers. We also buy in Red Poll store cattle to finish. Our "hobby herd" was started in 2008 and quickly became a passion and a business. We show too but only at our nearest county shows of the Norfolk and Suffolk. I have far too many bulls, 7 in total but they are lent out and I set up small breeding groups as I am also interested in the genetics. We have one with Australian blood lines in him.

I have attached a couple of show pictures from this year, one showing me, my daughter Ruth and my Grand Daughter Ivy-Renn who also has the Red Poll bug!! The other is of the Suffolk Trinity, that being the three



farm animals that originated in Suffolk, the Red Poll (obviously!), the Suffolk Punch Horse and the Suffolk sheep.

Just a quick snapshot of what we do here and our Hopeham Herd.

Note: The bull is Hopeham Leviticus. He is 4 years old. He is a fourth-generation bull from their stud. He is also featured in the photo of the real-life Suffolk Trinity. *See centrefold.*

USA NEWS

Muriel McKee (from Illinois in the United States) passed away August 11, 2025 at age 94 years. She and her husband, Jim, were Red Poll breeders for 70 years. They attended over ten of the Red Poll Congresses starting in 1976. Muriel always enjoyed the tours and looked forward to renewing friendships with people all over the world. We, members of her family, are grateful for the opportunities and experiences in which they participated.

Our best wishes to all.

Meredith McKee



Jim and Muriel McKee when we were hosted by them on the 2017 USA International Congress Tour. Jim passed away in 2019.

[Meredith tells me the cattle were sold but the buyers lease their land for grazing so she can still look out over the herd with no worries about management. Editor]

]

REPORT FROM AJ FARMS RED POLL STUD, WORSLEY, CANADA

We have had a fantastic year here in Worsley Alberta Canada.

We started with a very successful calving season where we got to calve out our first set of home-raised red poll heifers. We were also blessed with twin Red Poll heifers who later became Nizzy and Nosey. We also got see more crossbred calves born this spring. We love seeing the energy in these calves.

Our 2025 Red Poll bulls did really well this year and we were able to completely sell out by middle of June. Wishing we had more because the demand is starting to increase.

They're never too young to help!

Unfortunately, we had a dry summer and didn't get the feed home we normally do. But that never stops us, we just buckle down and it's grain and alfalfa pellets twice a day till we see green grass again. Our winter so far has been pretty mild with a couple of cold snaps but nothing we can't handle.

Thank you, Helen for letting us share our year with you. I look forward to giving you an update in the spring. We are expecting 51 new babies.

Arthur and Jennifer Weber



One of the young bulls at Bickford's



SHADOW CREEK FARMS, Canada, December 2025



Feeding out to the cows

(photo taken 6.12 25)

Dean's rundown on their operation.

During the summer the cows and calves are on pasture. We wean the calves late September and they go on dry feed while the cows go back out to pasture. I will start supplementing their feed usually early November. We have snow on the ground from late October till mid-April with the coldest months being December, January and February. When the snow gets deep and it becomes difficult for the cows to rustle grass then I start feeding full rations rolled out on the pastures.

If the weather becomes difficult; wind and blizzard, then I feed in a sheltered area. The picture from today shows the herd in a sheltered area. The cows are all in real good shape and the snow on their back shows they are not losing body heat even though it is minus 20.

Around mid-February we bring in the two-year-old, first calf heifers as well as any cows that I inseminated from various AI sires. These will be in a pen beside the barn till they go into labour and then they go into the barn. The heifers will usually stay two days in the barn to mother up while the older cows will be in

for just a day. By the first part of March Marsha will bring in cows that are getting close to calving so we can keep an eye on them.

The cows and calves go into a separate pen with calf shelters and lots of straw bedding. This allows the cows to have better feed, and the calves can get out of the weather and stay dry.

By mid-April the cows have finished calving, the young bulls have been tested and sold to commercial cattle operations. Early May the young heifers have either been sold to other registered breeders or turned in with one of our herd sires.

The herd will remain on dry feed until the 1st of June when the herd bulls with their cows go out to individual pastures. And the cycle starts again!



Heifers in one of the pens at Dean & Marsha's

A BIT OF HISTORY

National Library *Papers Past*. Press 21 February 1986

BREED WIDESPREAD THROUGHOUT THE WORLD

Although New Zealand has only a small population of Red Poll cattle, the breed is widespread throughout the world.

Red Polls originated in England in the early eighteenth century and can now be found in America, Argentina, Australia, Brazil, Canada, Columbia, Jamaica, New Guinea, Mexico, Romania, South Africa and Zimbabwe.

Sir R. Heaton Rhodes, of "Otahuna", near Tai Tapu, introduced Red Polls to New Zealand in 1898 and the New Zealand Red Poll Cattle Breeders' Association was formed in 1921. The main beef breed in Jamaica is based on Red Polls and in Brazil 500,000 cattle, bred from Red Polls form the Pitanguera breed.

The red colour of their coat allows the Red Polls to withstand tropical heat. The breed also carries a degree of tick resistance. [*May need a cross of bos indicus cattle to confer this. Editor 2025*]

New Zealand Red Polls have been exported to Tahiti where they are reported to be the best cattle tried in the tough tropical conditions.

In Australia, Red Polls compete successfully in steer carcase competitions against other breeds and crosses and last year a Red Poll steer sold for more than \$1000 at the Addington market in Christchurch.

New Zealand Red Poll breeders say there has been a good demand recently for Red Poll bulls to mate with dairy herds to produce easy calving dairy beef. Red Polls were originally dual-purpose cattle, and many people still regard them as milking cattle as well as beef producers. Red Polls are still milked in Northland, but most herds in New Zealand use the breed's milking ability to rear early maturing calves.

The breed's standard states that "the breed was evolved to combine the production of the very highest standard of beef with a superior milk yield. Judging should aim at deciding the best combination of these qualities, moreover, an obvious deficiency in one cannot be counter-balanced by superlative excellence in the other".

Red Polls originated from a cross between the Norfolk Red (a deep red horned beef animal) and the Suffolk Dun (a polled dairy breed). The ability of the Red Polls to survive in tough conditions stems from the breed's background of

evolving in East Anglia, an area noted for cold winds which sweep in from the North Sea.

Cropping rotations of barley, clover, wheat and turnips were developed in Norfolk and the cattle became used to living outdoors and existing on crop residues. This has contributed to the breeds hardiness.

In New Zealand, Red Polls thrive under a range of conditions – from Northland to the drier Canterbury Palins, the steep hills of Taihape and Taumarunui, and the tussock hill country in Middlesbrough and Southland.

Red Poll Society (UK)

If you would like to join to the Red Poll Cattle Society (UK) contact secretary@redpoll.co.uk

or write to:

The Secretary, 48 Mayfield Road, Writtle, Chelmsford, Essex CM1 3EL, England.

The overseas associate membership subscription is £30 sterling; includes three printed issues a year of the newsletter. The newsletter is also available to view on-line, gratis.



NZ Red Poll Badges Available

These are well made and beautifully finished and each one comes in a lovely presentation packet.

\$15 each + p & p (About \$3.50 for up to 6 badges). Size is approximately 3cm by 2¾cm.

Order from the Secretary, Warwick Potts, who will supply an invoice and the badge/s.



Photos Back Cover

Top: Kathy Yaxley leading Strathwell Misty. Gerard Gibb with Bob the calf at Ellesmere A & P show.

Bottom: The two heifers on the left are from Rosemarkie Farm and the one on the right is Reta named after me. Reta is my middle name. (Priscilla Mudgeway, Whiskey Creek Stud)

